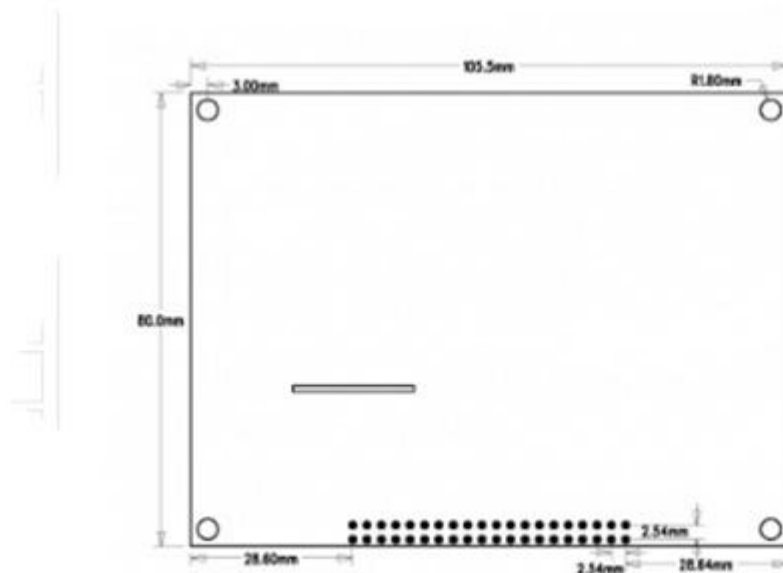
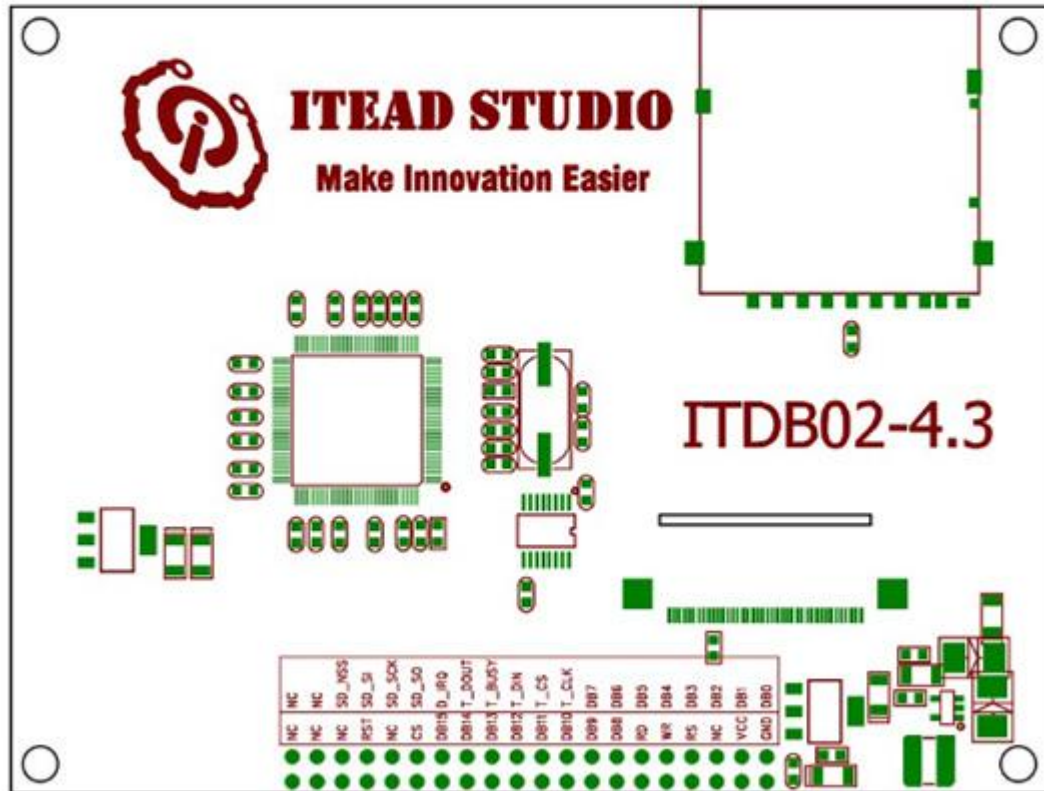






ITDB02-4.3 module is 4.3" TFT LCD with 65K color 272x 480 resolutions. The controller of this LCD module is SSD1963, it supports 16bit data interface with 4 wires control interface. Moreover, this module includes the touch screen and SD card socket.

ITDB02-4.3 is supported by UTFT Library.



Pin	Type*	Description
GND	G	Ground
VCC	P	5V Power Supply pin
NC	-	No connection
RS	I	Data/Command selection
WR	I	Write signal enable, low active
RD	I	Read signal enable, low active
DB8	I	Data Bus
DB9	I	Data Bus
DB10	I	Data Bus
DB11	I	Data Bus
DB12	I	Data Bus
DB13	I	Data Bus
DB14	I	Data Bus
DB15	I	Data Bus
CS	I	Chip Selection, Low level active
NC	-	No connection
LED	P	Backlight
NC	-	No connection
DB0	I	Data Bus
DB1	I	Data Bus
DB2	I	Data Bus
DB3	I	Data Bus
DB4	I	Data Bus
DB5	I	Data Bus
DB6	I	Data Bus
DB7	I	Data Bus
T_CLK	I	Touch clock
T_CS	I	Touch chip selection
T_DIN	I	Touch data input
T_BUSY	O	Touch status
T_DOUT	O	Touch data output
T_IRQ	O	Touch interrupt